

Nitoproof 10 & 30

Bitumen / rubber latex emulsion

Uses

Fosroc Nitoproof 10 & 30 are bitumen / rubber latex waterproofing and damproofing compounds designed for use as a damp proof membrane, vapour barrier, waterproofing and protective coating. It is used in the following applications:

- Damp proof sandwich membrane in concrete floors.
- Waterproof membrane to retaining walls and flat roofs.
- Nitoproof 10 & 30 act as dual purpose waterproofers and curing compounds
- Nitoproof 30 provides a waterproofing membrane for basement structures.
- Vapour barrier to cladding panels.
- Repairing the cracks and crazing in asphalt surfaces.

Advantages

Nitoproof 10 & 30 have a number of significant advantages as follows:

- Cost saving material which can be used as a waterproofer and curing compound in a single application.
- Economical in use
- Easy to apply by brush, squeegee or airless spray
- Single component, non-solvent based material
- Resists attack by chloride and sulphate ions present in ground water
- Adheres to wide range of materials including concrete, steel, cork and wood.

Description

Nitoproof 10 is a brown/black liquid blend of selected bitumens emulsified with water to give an easily applied protective coating.

Nitoproof 30 is a rubber reinforced, bitumen emulsion. It is supplied as a single component liquid, dark brown in colour, which dries to form a black flexible coating.

Nitoproof 10 & 30 are applied by brush or squeegee. The incorporation of rubber latex imparts elasticity to the dried coating which is waterproof and resistant to water vapour penetration.

Nitoproof 10 & 30 are suitable for use on most building materials such as concrete, brickwork, metals and stone. It is easily applied and may be used on damp surfaces, provided that no free water is present. It can also be applied to green concrete immediately after shuttering has been struck.

Coating thickness will vary with the type of application and nature of the surface to be coated. For guidance, a dried two coat application of Nitoproof 10 & 30 over a smooth surface should average around 0.7 mm in thickness and will provide a damp proof membrane within the requirements of British Standard of Practice CP 102:1973.

Design Criteria

External walling and cladding:

Nitoproof 10 & 30 is recommended for use in structural separation joints between concrete frames, insitu and precast concrete and composite cladding panels and brick and block walling, and as a vapour barrier to cladding panels.

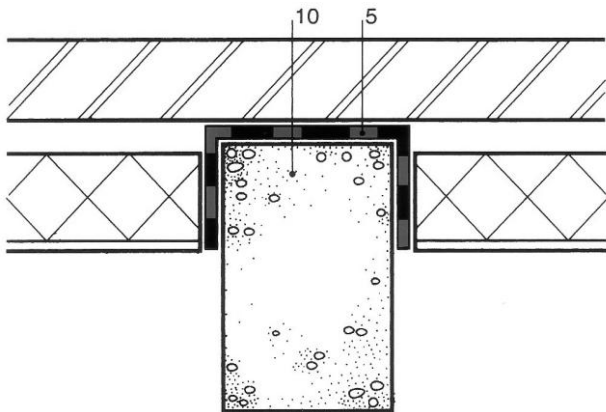
Protective coatings and crack sealing

Nitoproof 10 & 30 are recommended as a damp proof sandwich membrane for ground floor slabs and as a protective membrane to bridge piers, abutments and other concrete substructures prior to backfilling. It is also suitable as a low cost waterproofing to concrete, asphalt and felt roofs.

Nitoproof 10 & 30 are recommended for reinstating surfaces with leaks due to surface porosity or crazing and it may be used to fill cracks up to 5 mm wide. Larger cracks should be chased out to at least 10 mm wide and repaired with a joint sealing compound such as Fosroc Plastiseal for roofs or Fosroc Pliastic for roads.

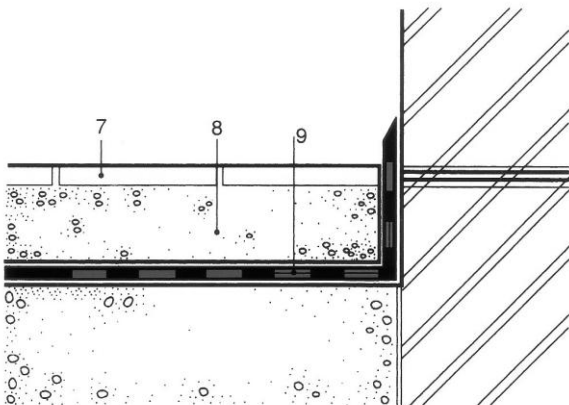
Nitoproof 10 & 30

Example of a structural separation joint is shown below.

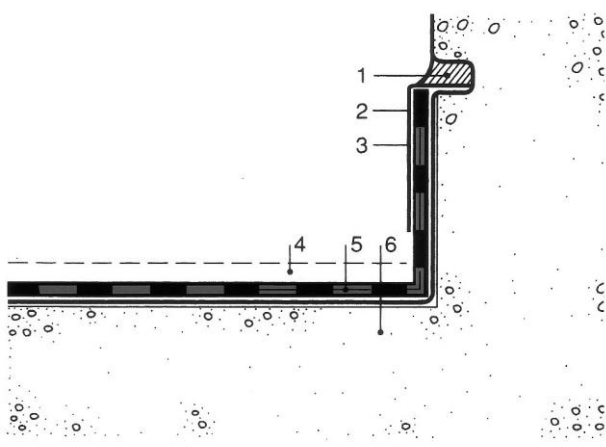


4. Sharp sand blinding
5. **Nitoproof 10 & 30**
6. Existing roof
7. Wood block
8. Screed
9. **Nitoproof 10 & 30** with bitumen saturated glass fibre reinforcement covering junction between sub-floor and wall
10. Reinforced concrete column

Example of remedial roof treatment is shown below.



Example of damp proof membrane under floor screed is shown below.



1. Plastijoint
2. Flashing
3. **Nitoproof 10 & 30** saturated glass fibre reinforcement

Properties

Product	:	Nitoproof 10 & 30
Colour	:	Black
Form	:	Thixotropic liquid
Storage Life	:	6 months
Solids content	:	60%
Density	:	1.00 kg / litre
Application temperature	:	5 to 50°C
Drying time	:	4 to 6 hours. 2 - 6 hours should be left between coatings.

Application instructions

Preparation

Surfaces must be clean and free from dust, dirt, oil, grease, moss and loose material. Nitoproof 10 & 30 may be used on damp surfaces but there must be no standing water.

Nitoproof 10 & 30 may also be used on uncured concrete. Metal and timber surfaces should be primed with a coat of Fosroc Bituminous Primer i.e. 1 part Nitoproof 10 & 30 to 1 part clean water.

Application

Nitoproof 10 & 30 may be applied by brush, squeegee or airless spray. Where required Nitoproof 10 & 30 may be reinforced by a bedding layer of bitumen-saturated geotextile fabric, such as Margalss 250 or Scrim 2250, into the first full coat, prior to application of subsequent coats. When used as a sandwich damp course to ground slabs, the final coat should be blinded with clean sharp sand passing through a 3 mm sieve to provide a key for the second concrete pour. Limestone should not be used.

Nitoproof 10 & 30

When used as a low cost roof treatment, the final coat should be protected from sunlight with solar tiles bedded in the wet final coat or by blinding with clean sharp sand as described above. If required, the treated surface may be painted for maximum heat reflection with cement or vinyl based emulsion paint.

Nitoproof 10 & 30 is water based and remains soluble until thoroughly dry. It is therefore important that it should not be applied during rain or when rain is expected. When used a waterproofing system for RC flat roofs Nitoproof 10 & 30 can be applied by brush, squeegee or spray. It must be thoroughly stirred before use.

For efficient waterproofing, a minimum of one priming and three full coats with fiberglass must be used.

Porous surfaces such as concrete or asbestos cement must first be treated with a coat made up of a solution of Nitoproof 10 & 30 and clean cold water mixed in equal parts. Metal and timber surfaces must be primed with a coat of Fosroc Bituminous Primer before applying Nitoproof 10 & 30. For horizontal surfaces, a squeegee or a cheap, soft bristle broom is satisfactory. For vertical surfaces, use a cheap turks head brush.

Nitoproof 10 & 30 should be laid on the surface using the brush in one direction, and not brushed out. During a break in work or when it is completed, the brush should be cleaned in a strong detergent solution and then in running water.

Brushes should be of an inexpensive type and considered as expendable. Paint brushes are not suitable. On larger jobs, it is preferable to maintain several brushes in use.

If paint is applied direct to the Nitoproof 10 & 30 membrane, severe crazing and cracking of the paint film will occur; although this is not serious, it spoils the appearance of the roof when seen from above. It is preferable to blind the final coat with chippings and, when dry, surface can be painted

with cementitious or PVA paint.

No solvent based materials should be used as the solvent will soften the bitumen in Nitoproof 10 & 30.

Cleaning

A proprietary hand cleaner such as "Swarfega" may be used for removing Nitoproof 10 & 30 from the hands.

Thinning

Nitoproof 10 & 30 is supplied ready for use. If however, after thorough agitation the compound appears unduly thick it can be thinned with not more than 0.25 litre of clean water per 5 litres of Nitoproof 10 & 30.

Estimating

Supply

Nitoproof 10 & 30	20 and 200 litre drums
-------------------	------------------------

Coverage

Neat Coat

Nitoproof 10 & 30 :	1.2 to 1.8 m ² / litre
---------------------	-----------------------------------

Priming Coat :	2.4 to 2.8 m ² / litre
----------------	-----------------------------------

Primer No. 3 :	12 to 15 m ² / litre
----------------	---------------------------------

Precautions

Health and safety

Nitoproof 10 & 30 contains bituminous material. Possible risk of irreversible effects in contact with skin. Wear suitable protective clothing, gloves and eye/face protection. Should accidental skin contact occur, remove immediately with plenty of clean water and seek medical advice. If swallowed, seek medical attention immediately - do not induce vomiting.

Fire

Nitoproof 10 & 30 are not flammable.



Jl.Akasia II Blok A8 No.1
Delta Silicon Industrial Park
Lippo Cikarang
Bekasi 17550
Indonesia
www.fosroc.com

Important note

Fosroc products are guaranteed against defective materials and manufacture and are sold subject to its standard Conditions for the Supply of Goods and Services, copies of which may be obtained on request. Whilst Fosroc endeavours to ensure that any advice, recommendation, specification of information it may give is accurate and correct, it cannot, because it has no direct or continuous control over where or how its products are applied, accept any liability either directly or indirectly arising from the use of its products, whether or not in accordance with any advice, specification, recommendation of information given by it.

telephone:
+62 21 897 2104-06
+62 22 727 5647
+62 31 854 9704

fax:
+62 21 897 2107
+62 22 727 5649
+62 31 894 9845

email:
Indonesia@Fosroc.com